

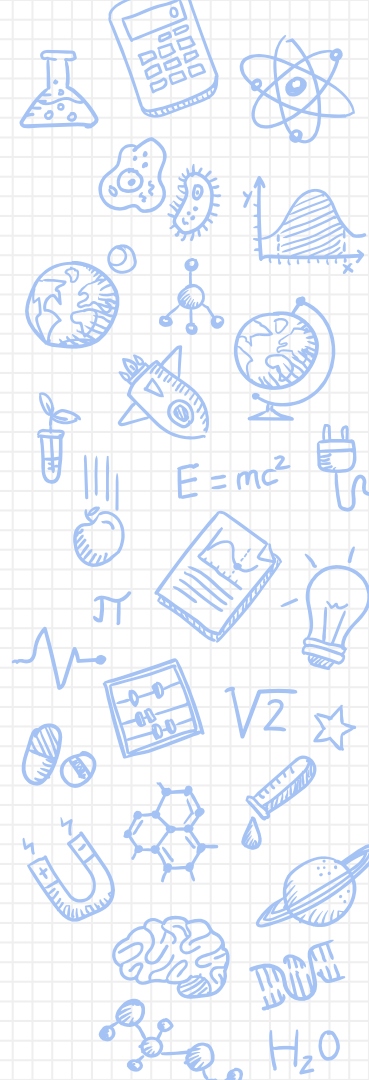


Voice of Water

If water could speak, what would it say?

Overview

- ✘ We have explored several case studies to explore how we use water and how water connects to land, life, and climate.



Creating a Case Study

- ✘ Now it's your turn to explore water around the world through the lens of water's voice
- ✘ Ask yourself the question...

If water could speak, what would it say?



Your Turn

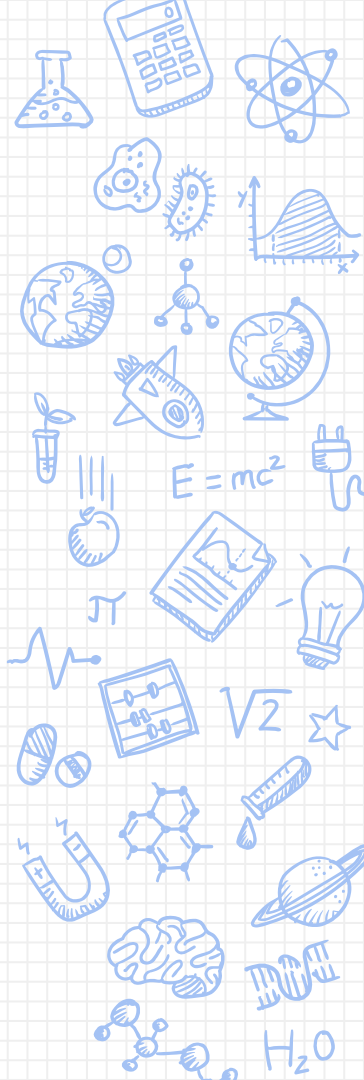
1. Pick a body of water that you have a connection to or that you find interesting
2. Using the four pillars that we have explored through our rotation, you will explore your body of water
3. Through research you will create an output of your learning that will highlight your answer to the guiding question – **“If water could speak, what would it say?”**



Choice Board

Some options for your output could include:

- ✘ Model of your body of water
- ✘ Video/Podcast
- ✘ Interview with an expert
- ✘ Newspaper article
- ✘ Interactive minecraft world/NPC
- ✘ Literally anything else!



The Process

Step 1 - The Planning

- With the guidance of your teacher and peers, you will create an outline for your research and output

Step 2 - The Research

- Answering your research questions, you will explore your body of water to gain knowledge

Step 3 - The Output

- Transfer your knowledge from your research to create your output



WATER Planning Sheet

STUDENT NAME: _____

What body of water did you choose?

What is your connection to this place?

You must make a connection between your body of water and each of the four pillars below. Specify where you will be collecting your information from. You must use at least **three** different mediums (podcasts, articles, interviews, videos) to collect information.

Land

How does your body of water and land interact?

What sources will you gather information from?

- Article
- Podcast
- Video
- Observation
- Experiment
- Other -

Climate

How does climate impact your body of water?

What sources will you gather information from?

- Article
- Podcast
- Video
- Observation
- Experiment
- Other -

Life

What aquatic life lives in and around your body of water?

What sources will you gather information from?

- Article
- Podcast
- Video
- Observation
- Experiment
- Other -

Use

How do humans use and interact with your body of water?

What sources will you gather information from?

- Article
- Podcast
- Video
- Observation
- Experiment
- Other -

WATER Planning Sheet

Guiding Question:

Answer the question: "If water could speak, what would it say?" from the perspective of your body of water.

Output:

What will be your learning **output** for this research? How do you plan on showcasing your answer to the guiding question?

Materials:

What supplies do I need to be successful?

Purpose & Audience:

Who are you targeting with this work? What is your purpose for creating it?

Am I ready to start my Output?

- I have made thoughtful and intentional connections to each of the four pillars
 - Land
 - Climate
 - Life
 - Use
- My research questions have been answered with enough detail for me to transfer my learning to my output
- My research has been peer-reviewed
- I can answer the question "If water could speak, what would it say?" in relation to my body of water

Schedule and Feedback:

What are the major tasks for your output? When should you receive feedback (teacher/peer)? When should you complete these tasks?

- Checkpoint 1** _____ should be (peer/teacher) reviewed by _____ and should be completed by _____.
- Checkpoint 2** _____ should be (peer/teacher) reviewed by _____ and should be completed by _____.
- Checkpoint 3** _____ should be (peer/teacher) reviewed by _____ and should be completed by _____.

Approvals

STUDENT SIGNATURE: _____

TEACHER SIGNATURE: _____

PARENT SIGNATURE: _____