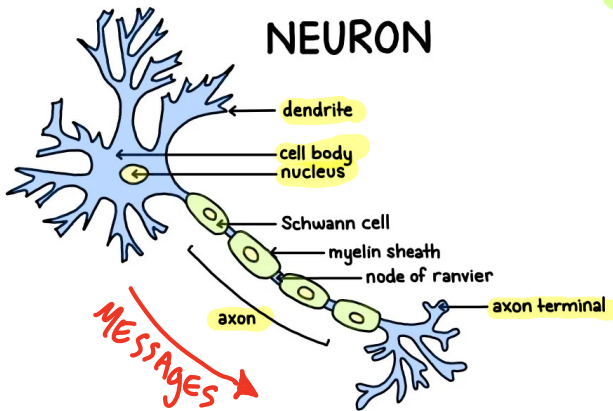


# NERVOUS SYSTEM

- The job of the nervous system is to respond to your environment

REACTS to Stimuli → can be

- External (ex: temperature)
- Internal (ex: food arriving in stomach)



- unlike most systems, the nervous system is composed almost entirely of 1 tissue

100% made of NEURONS

↳ its job: send & receive messages

- A neuron receives messages from small branches of cell (DENDRITES) which pass the message through cell to the AXON

↳ carry messages to dendrites of other cells.

## Organization: Division of nervous system

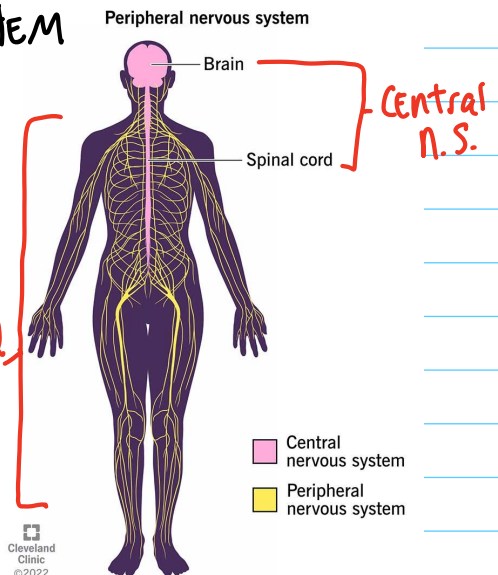
- Central nervous system: Brain & spinal cord

- Peripheral nervous system: Head & spinal nerves

↳ 2 types of neurons

① Sensory neurons: carry info from body to central n.s.

② Motor neurons: carries info from central n.s. to muscles & organs.



2 other parts of peripheral N.S.

- > somatic nervous system -> voluntary responses
- > autonomic " " -> automatic " "

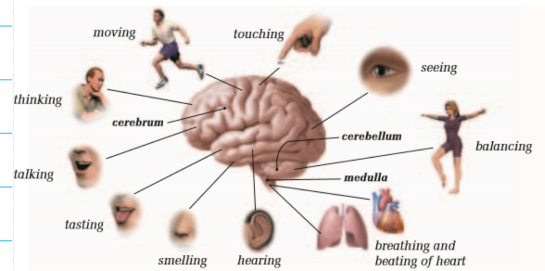
EX: turning your head

EX: -breathing  
-pupils dilating

## Central Nervous System

- Brain receives stimuli from outside world & internally from body

- spinal cord connects brain to peripheral nervous system



## REFLEX RESPONSE

- sensory & motor neurons work together without help of the brain

-> This is known as a REFLEX

[ An automatic response by nervous system to an external stimulus ]

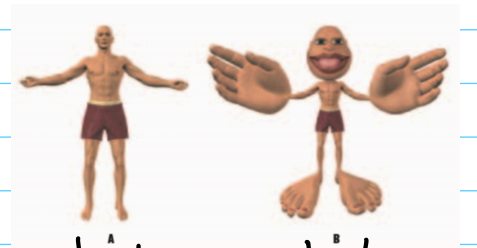
[ - by the time the neurons have sent this message to the brain, your body has already reacted. ]

- this exists to reduce the time it takes to respond or remove yourself from harmful situations. #Evolution

## UNEVEN SENSE OF TOUCH

- unlike other senses (sight, hearing, smell, taste) the sense of touch is not found in one specific place.

... this makes skin the largest organ in human body



DRAWN TO NORMAL PROPORTIONS

DRAWN IN PROPORTION TO ITS SENSITIVITY TO TOUCH

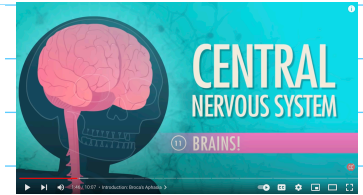
## ☐ Brain, Spinal Cord, and Nerve Disorders (9)



Angioplasty with Stenting  
Arteries of the Brain  
Basal Ganglia: Frontal View

Brain  
Midbrain: Cross-Section (Normal Anatomy)  
Multiple Sclerosis: Neurons with Degenerated Myelin

Nerve Impulse  
Parkinson Disease in the Midbrain  
Spinal Column and Spinal Cord



WANT TO WATCH? CHECK OUT THE  
CRASH COURSE VIDEOS HERE