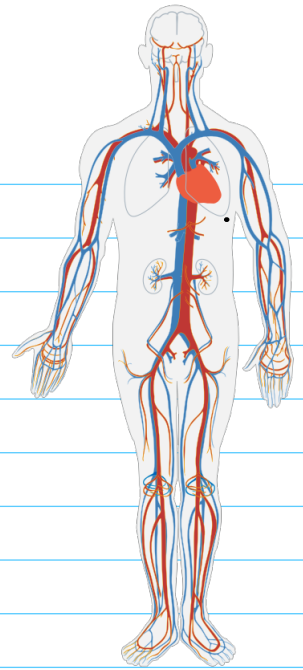


CIRCULATORY SYSTEM



THE CIRCULATORY SYSTEM IS YOUR BODY'S TRANSPORTATION SYSTEM

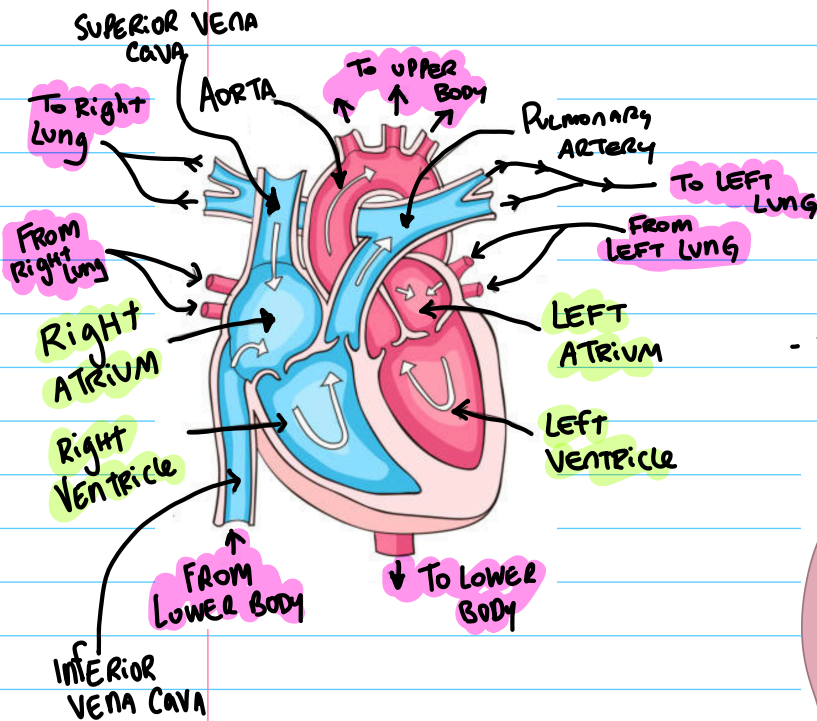
MOVES NUTRIENTS & OXYGEN AROUND YOUR BODY & REMOVES WASTE.

THE HEART → PUMPS YOUR BLOOD

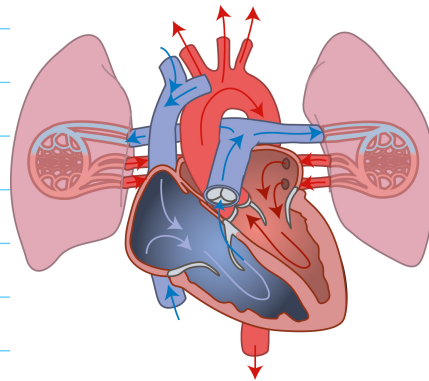
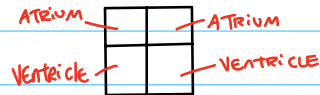
- IS ACTUALLY 2 SEPARATE PUMPS (RIGHT VS. LEFT)
- WORK TOGETHER BUT SEPARATE "JOBS"

- THE RIGHT SIDE PUMPS BLOOD TO YOUR LUNGS.

- THE LEFT SIDE RECEIVES OXYGEN RICH BLOOD FROM LUNGS & PUMPS IT THROUGHOUT YOUR BODY.

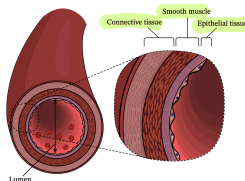


- TWO SIDES OF THE HEART EACH HAVE 2 CHAMBERS



ARTERIES, VEINS & CAPILLARIES

- WE HAVE VESSELS THAT CARRY BLOOD THROUGHOUT OUR BODY.



- 3 diff. TISSUES: ① CONNECTIVE on outside
- ② MUSCLE in middle
- ③ EPITHELIAL on inside

- VESSELS CARRYING BLOOD AWAY FROM HEART → ARTERIES
 - HAVE A THICKER MUSCLE LAYER IN MIDDLE THAT CONTRACTS & EXPANDS TO HELP PUSH BLOOD ALONG.
 - THIS EXPANSION IS WHAT YOU FEEL WHEN YOU FEEL YOUR PULSE
- VESSELS CARRYING BLOOD TO YOUR HEART → VEINS
 - THINNER & HAVE VALVES TO STOP BLOOD FROM FLOWING BACKWARD.

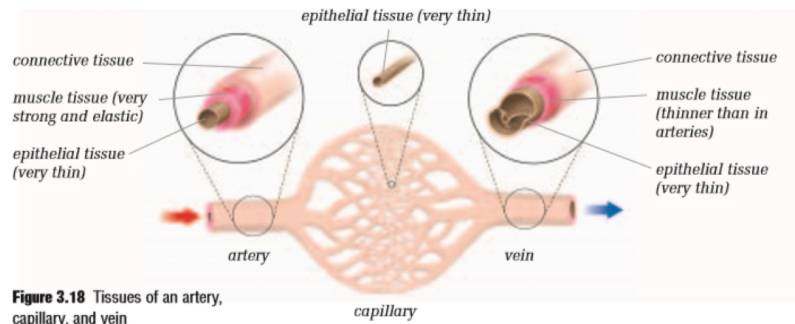
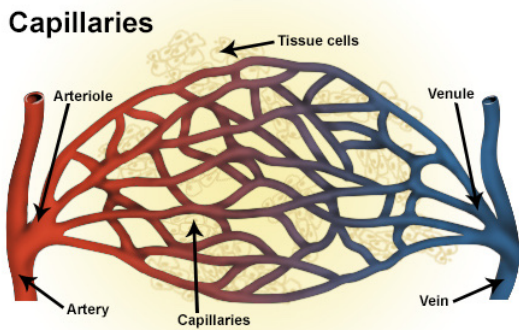
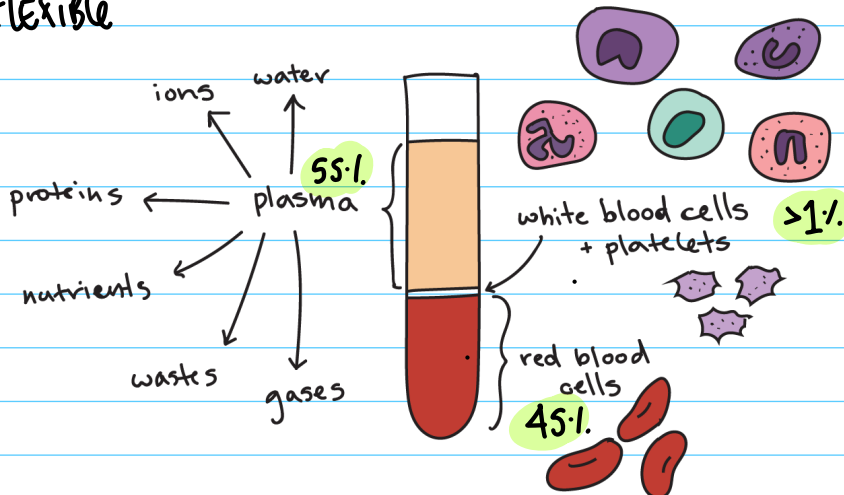


Figure 3.18 Tissues of an artery, capillary, and vein

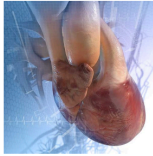
BLOOD → 2ND LARGEST EXAMPLE OF CONNECTIVE TISSUE AFTER BONES

↳ CONTAINS:

- **RED BLOOD CELLS**
 - CARRY OXYGEN
 - HAVE NO NUCLEUS TO CARRY AS MUCH O₂ AS POSSIBLE
 - VERY FLEXIBLE
 - **WHITE BLOOD CELLS**
 - FIGHT INFECTIONS
 - **PLATELETS**
 - CELLS THAT HELP TO STOP THE BLEEDING @ CUTS
 - **PLASMA**
 - LIQUID PORTION OF BLOOD
 - TRANSPORTS NUTRIENTS, CARRIES CO₂



☐ Heart and Blood Vessel Disorders (10)



Arterial Pulse
Atrial Fibrillation
Branches of the Abdominal Aorta
Cardiac Conduction System

Cardiovascular System
Left-Sided Heart Failure: Pulmonary Edema
Pulmonary Artery Catheterization
Ruptured Atheroma and Blood Clot

The Coronary Arteries
Ventricular Fibrillation



[WANT TO WATCH? CHECK OUT THE
CRASH COURSE VIDEO HERE]